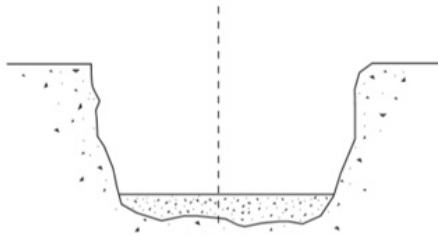
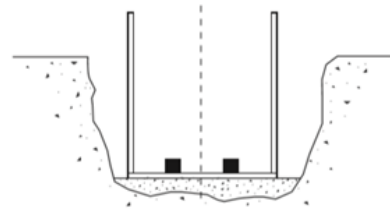




Novoform™ Permanent Formwork for Reinforced Foundations **Method of Installation**



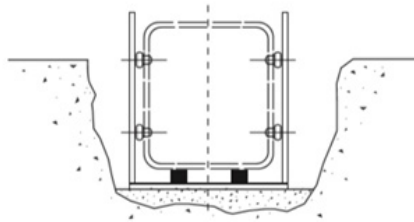
Excavate trench and form level base.



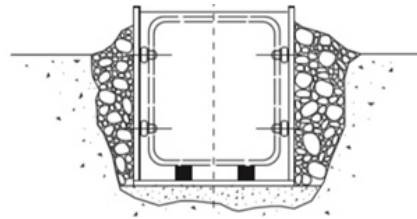
Position Novoform™ and place rebar chairs in base.

Novoform™ panels to be overlapped and secured with wire ties.

Spacers to be placed no greater than 12 inches apart in both vertical and horizontal directions.



Install rebar reinforcement. Attach side spacers and level with Novoform™.



Place loose backfill within top 2 inches of finished concrete level. Keep foot traffic and vehicles well clear of foundations under construction.

